



LINCOLN CANOE CLUB MEMBERSHIP REPORT 2018

New applications for membership.

		<u>2018</u>	<u>2017</u>	<u>2016</u>	<u>2015</u>	<u>2014</u>	<u>2013</u>	<u>2012</u>	<u>2011</u>	<u>2010</u>	<u>2009</u>
<u>NEW APPLICATIONS</u>	Sen	39	39	53	52	43	34	44	37	36	
	Jun	17	24	36	18	23	49	21	27	31	
	Total	56	63	89	70	66	83	65	65	67	70
<u>JOINED CLUB</u>	Sen	8	11	20	18	19	23	19	19	20	
	Jun	5	14	21	13	13	36	11	14	23	
	Total	13	25	41	32	32	59	30	33	43	28

Membership figures at year end, December 2018. (2017 in brackets)

	<u>HONORARY</u>	<u>OUTPOST</u>	<u>LIFE</u>	<u>SENIOR</u>	<u>JUNIOR</u>	<u>TOTAL</u>
<u>MALE</u>	5 (5)	12 (13)	7 (8)	41 (53)	24 (34)	89 (105)
<u>FEMALE</u>	1 (1)	4 (4)	1 (0)	22 (24)	20 (20)	48 (49)
<u>TOTAL</u>	6 (6)	16 (17)	8 (8)	63 (77)	44 (54)	137 (154)

Taster session applications were down from the previous year, 56 compared to 63, with only 23% or 13 electing to join the club. Participation in taster sessions was typical of previous years, but those who did eventually join the club, has dropped to its lowest figure.

This figure, however, does not reflect the actual rise, during the last year. Membership actually increased by 24, but this included family members of existing seniors and juniors.

We suffered a loss of 38 paddlers at the end of March this year, which has reduced our membership to 137.

Again, as in previous years, the majority of new applicants were predominantly seniors, an increase of 8% from the previous year: 70% compared to 62%. The juniors at 30% are down on last year (38%).

Those who eventually joined the club were mainly juniors, and again the boys outranked the girls by 3 members.

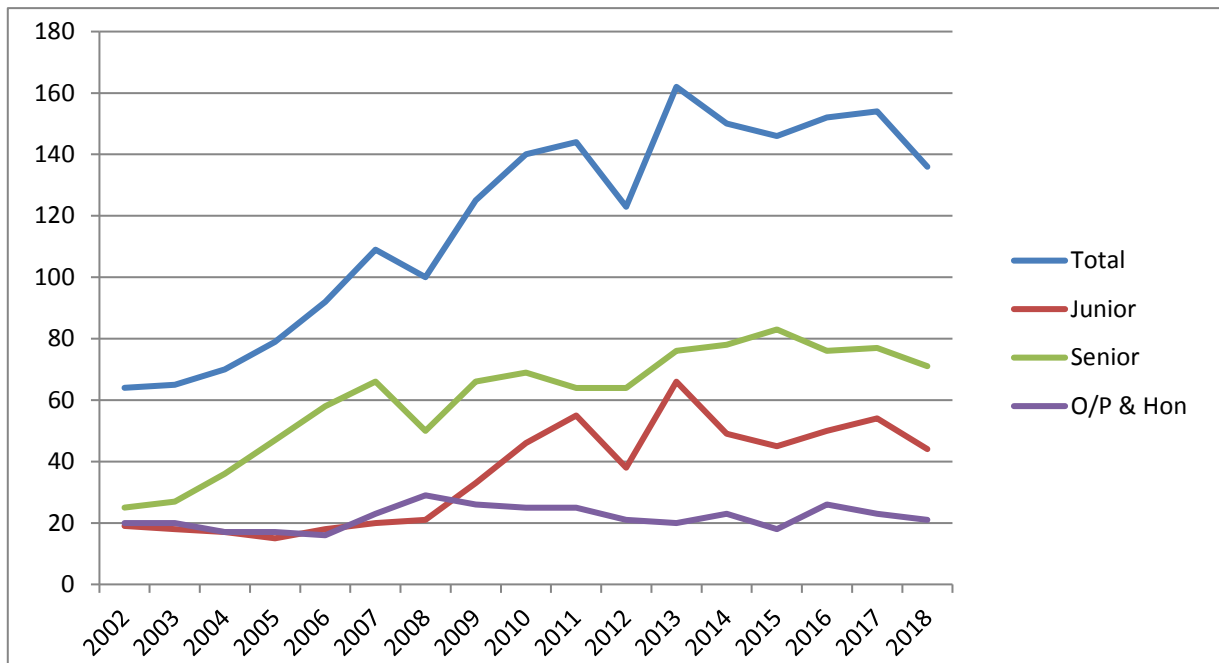
Outpost membership has stayed relatively stable over the last year and this year I have separated the Life members from the regular Seniors so they now have their own column!!

Our total membership, at the end of the year is 137; with 115 of those paddling, made of 62% male and 38% female.

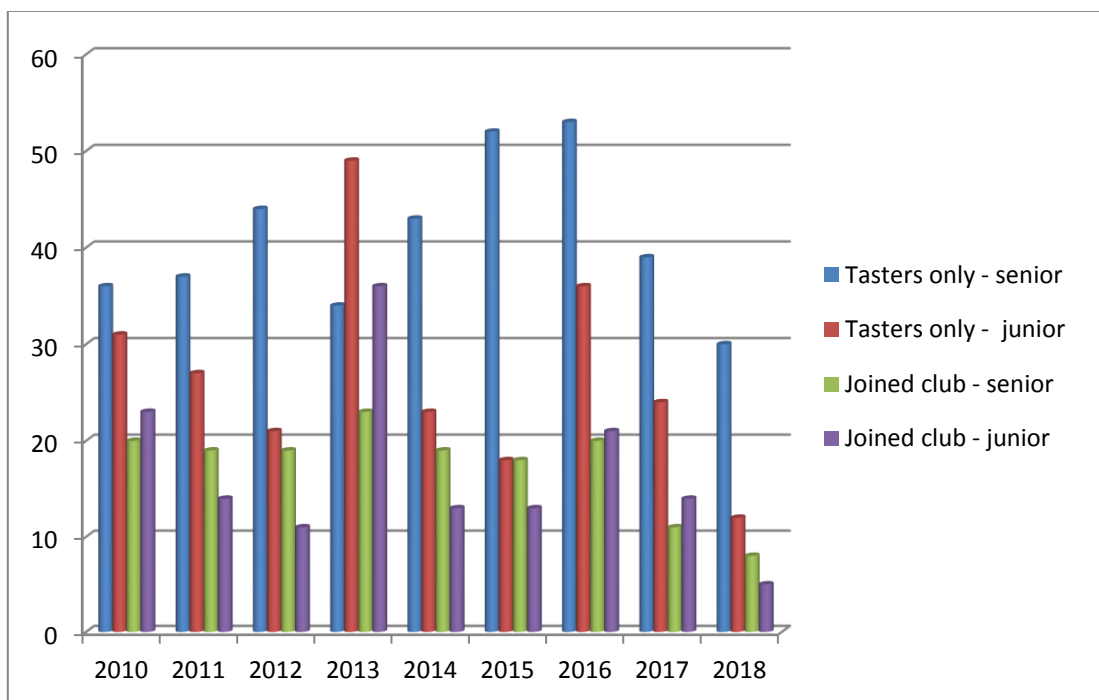
Lindsey Lack

30th December 2018

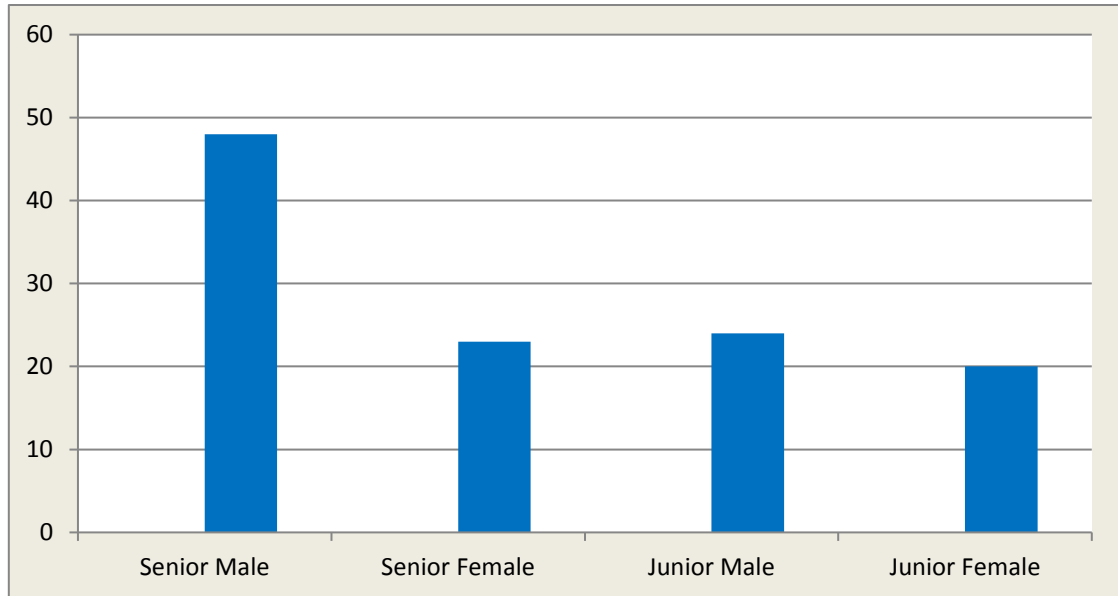
Membership figures 2002-2018



Taster sessions participation verses enrolment



Canoeing members only



Members age groups

